



2019 EDUCATION PROGRAM • FREE INDUSTRY SESSION



KIMBERLY BROWN
Cochrane Supply
& Engineering



SCOTT COCHRANE
Cochrane Supply
& Engineering

Introduction to Building Automation Systems

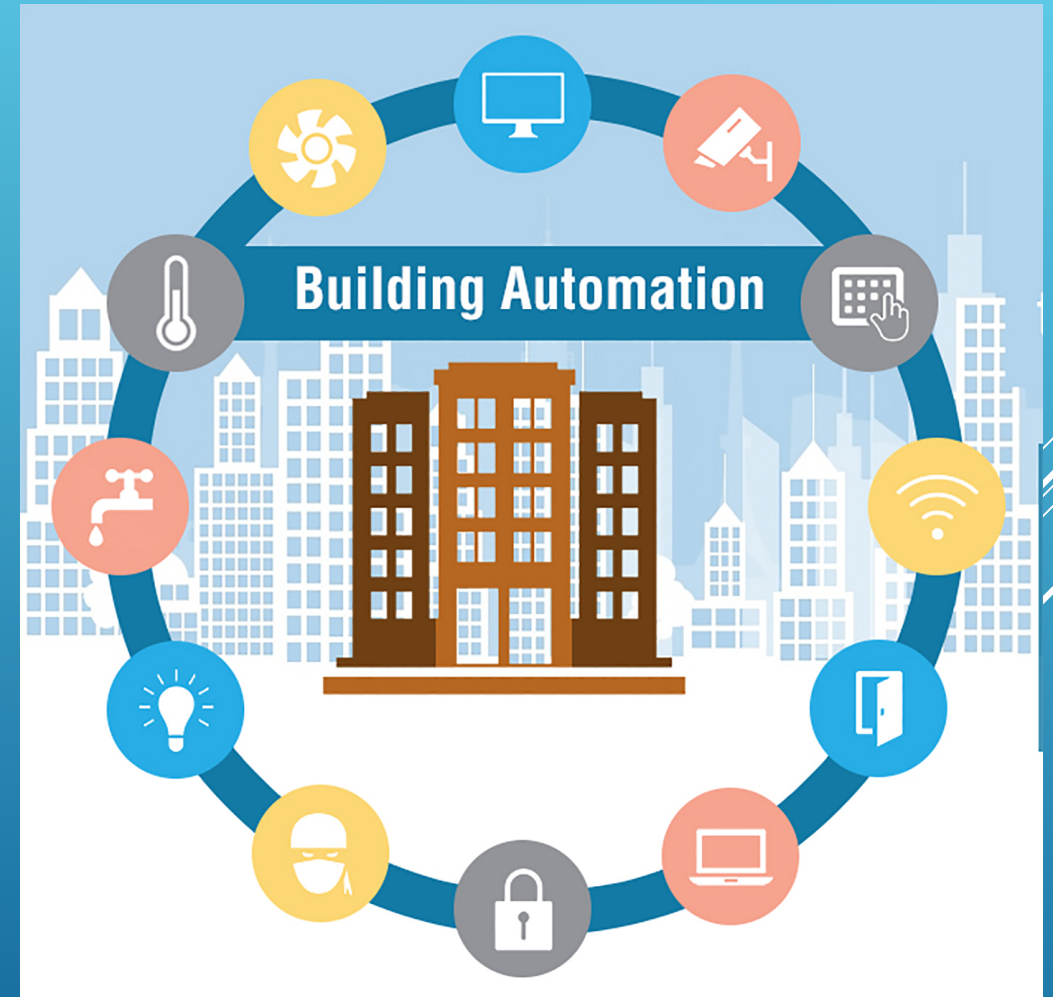
Presented by AutomatedBuildings.com

JOIN US! MONDAY, JAN. 14 • 10:30AM – 11:30AM • LOCATION: B311

Building Automation | What is it?

It's the automatic centralized control of a building's heating, ventilation and air conditioning, lighting and other systems through a Building Automation System (BAS) or building management system.

Source: Wikipedia



Building Automation | What is its Purpose?

Its **purpose** is to provide improved comfort, security, safety, power, and other services to occupants and building owners.

HOW? By putting computers from the following systems and connecting them together:

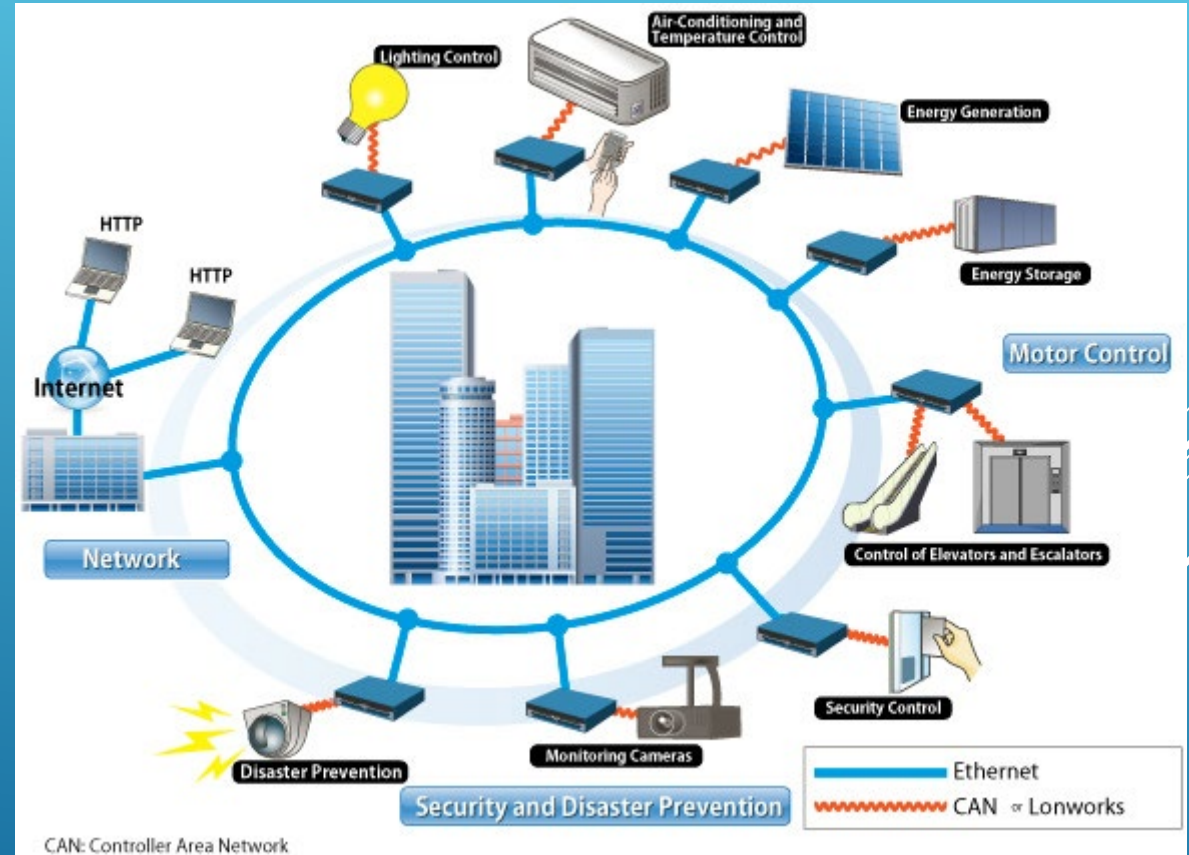
- HVAC
- Electrical Distribution
- Security Systems
- Life Safety Systems



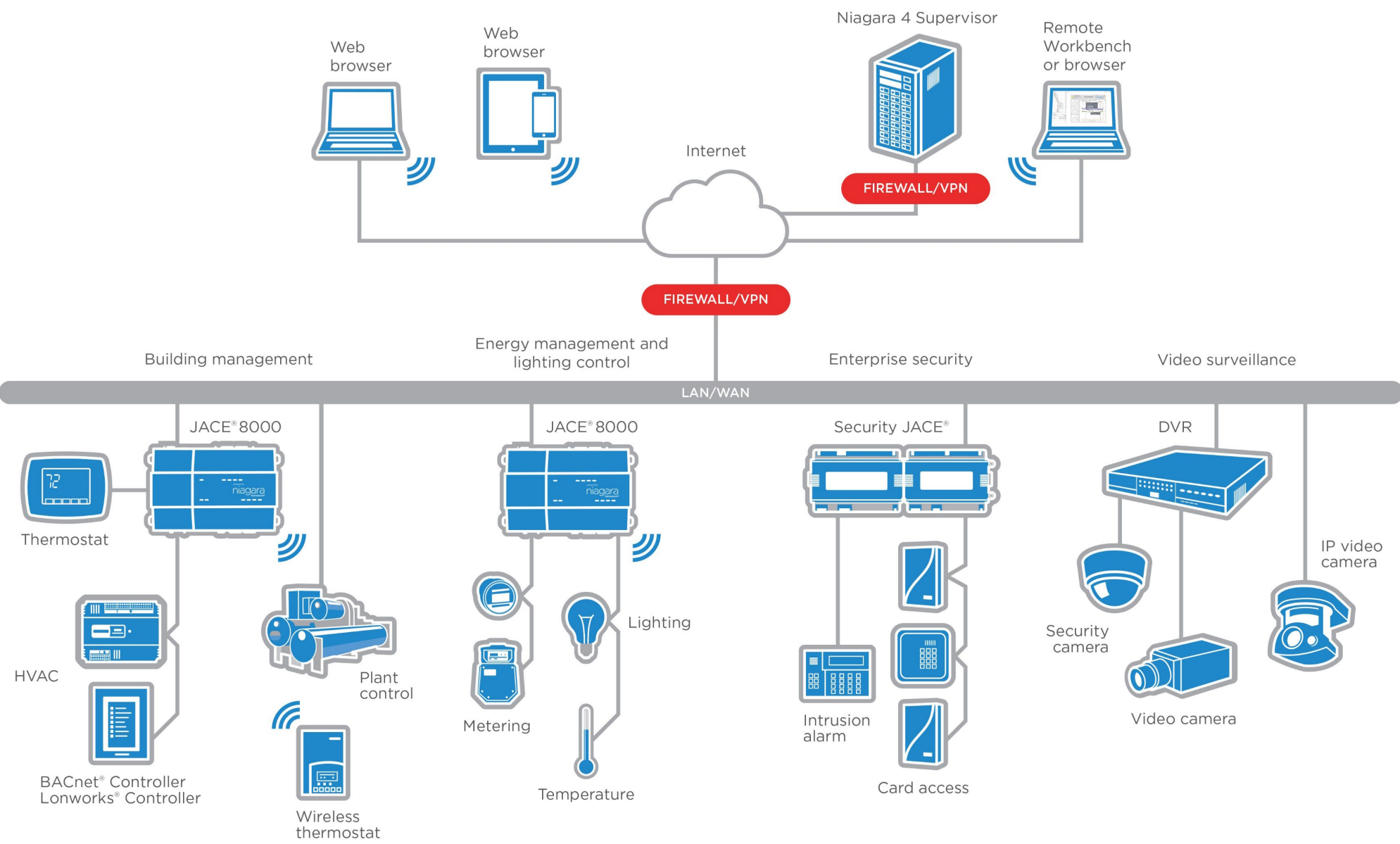
How Does a BAS Work?

Computerized Control of:

- Standalone
- Networked
- Global



System Architecture: A Day in the Life of BAS Data



BAS Data | What is it Used for?

- Automated Control and Monitoring
- Graphical User Interface (Computer Graphics)
 - Typical – Control, Monitor, Alert
 - Dashboards
 - Analytics – FDDs
 - Trending
- Cloud-Future of Data
 - Tagging
 - Added Services and Intelligence



Typical Benefits of BAS



- Energy Efficiency and Comfort
 - Comfort (Mechanical Systems)
 - Illumination
 - Power
- Business Efficiency
 - Reduce Costs of Operation
- Ensuring Code and Safety Requirements
 - Social Responsibility

BAS Resources

- Wikipedia
 - https://en.wikipedia.org/wiki/Building_automation
- AutomatedBuildings.com
- Cochran Tech Services
 - www.cochranetechservices.com
- Building Automation Monthly
 - www.buildingautomationmonthly.com





AHREXPO

2019 EDUCATION PROGRAM • FREE INDUSTRY SESSION



SCOTT BOEHM
Tridium

Building Automation 101

Presented by AutomatedBuildings.com

JOIN US! MONDAY, JAN. 14 • 12:00PM – 1:00PM • LOCATION: B311

THANK YOU!

A series of four parallel white lines of varying lengths, slanted upwards from left to right, located in the bottom right quadrant of the image.

cochranesupply.com